



Issued for Permit
08.05.2016

New Stanton, PA 15672

52 Blueberry Lane,
Grove City, PA 16127

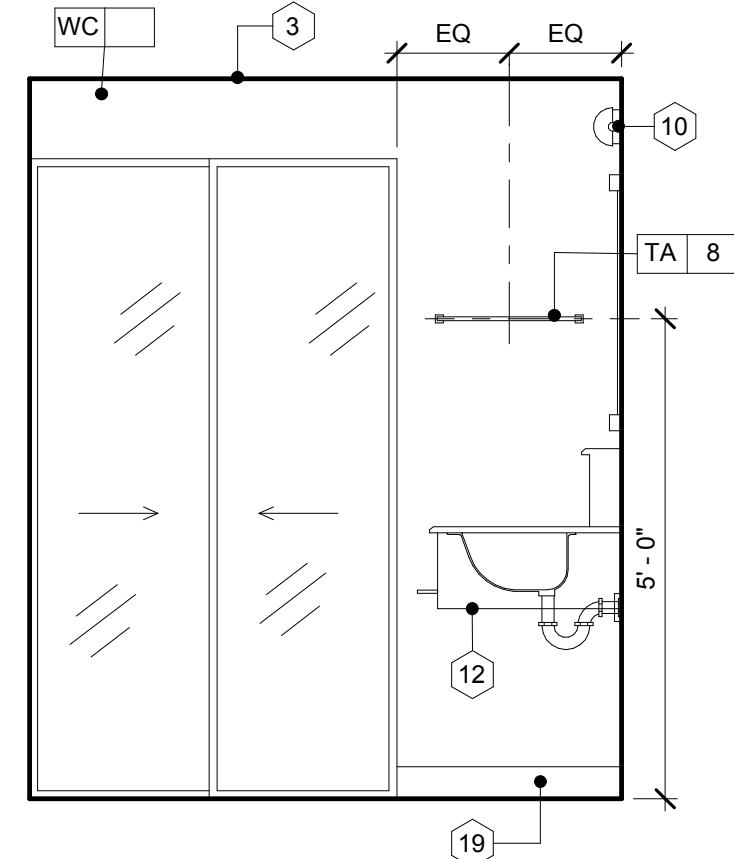
[illegible]

Enlarged Bathroom Plans, Elevations and Details

A-533



ENLARGED PLAN - TYPICAL
3 GUESTROOM BATH TUB
3/4" = 1'-0"



- 1 FULL HEIGHT CORNER GUARD, NO EXPOSED FASTENERS, COLOR TO COORDINATE WITH WALL.
- 2 CASE OPENING - PAINTED
- 3 CLOSET RESISTANT GY. BD. (TYP.)
- 4 CLOSET ROD TUBING, MOUNT AT 66" A.F. IN TYP. GUESTROOM AT ACCESSIBLE GUESTROOM PROVIDE HALF THE CLOSET ROD LENGTH AT 44" A.F. PROVIDE ACCESSIBLE TUBING ON MOST ACCESSIBLE SIDE OF CLOSET
- 5 TYP. GUESTROOMS CLOSET WOOD SHELF W/HARDWOOD EDG. AT 68" A.F. IN ACCESSIBLE GUESTROOMS WITH MOBILITY FIRST PROVIDE ACCESSIBLE CLOSET SHELF AT 48" A.F. PROVIDE ACCESSIBLE HANG ROD ON MOST ACCESSIBLE SIDE OF THE CLOSET - REFER TO CLOSET DETAIL

- 6 IRONING BOARD
- 7 NOT USED
- 8 ARTWORK
- 9 FLOATING TOWEL SHELVES (TA-21)
- 10 WALL MOUNTED LIGHT FIXTURE
- 11 FRAMED MIRROR
- 12 TYPICAL GUEST VANITY - REFER TO GUESTROOM DRAWINGS FOR GUEST ROOM FURNITURE SPECIFICATIONS
- 13 APPROVED SHOWER PAN - REFER TO HAMPTON STANDARD
- 14 APPROVED SHOWER SURROUND - REFER TO HAMPTON STANDARDS
- 15 CONTROL VALVE
- 16 SHOWER HEAD, ROUGH IN HEIGHT BETWEEN 6'-10" AND 7'-0" ABOVE FINISH
- 17 SLIDING GLASS SHOWER DOOR - CUSTOM HEIGHT
- 18 SHOWER BAR/ DRAWER PULL TO BE USED AS SECONDARY TOWEL HOLDER
- 19 VINYL BASE
- 20 BATHTUB - REFER TO HAMPTON STANDARDS
- 21 FLUSH LEVER MUST BE POSITIONED ON OPEN SIDE OF WATER CLOSET AS SHOWN
- 22 MIRROR COMPLAINT WITH ACCESSIBILITY REQS. MOUNT BOTTOM OF GLASS AT 4'-0" MAX. A.F.F.
- 23 TYPICAL ACCESSIBLE GUEST VANITY- REFER TO GUESTROOM DRAWINGS FOR GUEST ROOM FURNITURE SPECIFICATIONS
- 24 PROTECT PIPES FOR ACCESSIBILITY REQUIREMENTS
- 25 ACCESSIBLE SHOWER FLOOR NOT TO EXCEED 1/48 IN ANY DIRECTION
- 26 PROVIDE INSULATED FLOOR DRAIN IN THIS LOCATION FOR GUEST BATHS EQUIPPED WITH ROLL-IN SHOWER DRAIN WITH 12" DIA DISH. FLOOR SLOPE NOT TO EXCEED 1/48 IN ANY DIRECTION. PROVIDE TRAP PRIMER - COMPLY ALSO WITH LOCAL CODE WHERE APPLICABLE
- 27 CONTROL VALVE LOCATION FOR ACCESSIBLE ROOMS WITH MOBILITY FEATURES
- 28 ACCESSIBLE ADJUSTABLE SHOWER HEAD FOR ACCESSIBLE ROOMS WITH MOBILITY FEATURES - REFER TO HAMPTON STANDARDS
- 29 PADDED REMOVABLE ACCESSIBLE TUB SEAT - TO BE 15"-16" DEEP AND AT 17"-19" ABOVE FINISHED FLOOR WHEN IN USE
- 30 ACCESSIBLE BATH TUB
- 31 REFER TO TYPICAL BATH TUB DRAWING
- 32 PROVIDE ADDITIONAL TOWEL HOOK WITH TUB OPTION